

INFORMATIONAL CALL
REGARDING CORONAVIRUS DISEASE 2019
(COVID-19)

UPDATED STATEWIDE VISITATION GUIDANCE

Provider Information Notice (PIN) 21-40-ASC

CALIFORNIA DEPARTMENT OF SOCIAL SERVICES
COMMUNITY CARE LICENSING DIVISION
ADULT AND SENIOR CARE PROGRAM
FRIDAY, SEPTEMBER 3, 2021 2PM-3PM



CDSS

KIM JOHNSON
DIRECTOR

Speakers and Panelists



Kevin Gaines
Deputy Director
Community Care Licensing

Louise Aronson, MD, MFA
Professor, Division of Geriatrics,
University of California, San Francisco

Kimberly Lewis
Assistant Program Administrator,
Adult and Senior Care Program,
Community Care Licensing

Vicki Smith, PhD
Assistant Deputy Director, Residential
Community Care Licensing

Josh Allen, RN
Principal,
Allen Flores Consulting Group

Lilit Tovmasian
Branch Chief,
Policy, Training & Quality Improvement
Community Care Licensing

Today's Objectives

1. Review PIN **21-40-ASC**.
2. Review new requirements for licensees within PIN 21-40-ASC which implements the Public Health Order of 8/26/2021 regarding visitors requesting to enter the facility or for **Indoor Visitations**.
3. Clarify information and answer questions related to recent guidance on visitation, testing and vaccination verification for visitors.



PIN 21-40-ASC

Supersedes in part **PIN 21-17.2-ASC** (May 14, 2021) related to **Visitation**, including:

- Updated Visitation Waiver
- Process for verifying the vaccination status OR testing results of all indoor visitors
- Tracking/recordkeeping process of that verification

When local county, state and federal guidance differ, please follow the strictest requirement.



Contact your Regional Office for assistance if the strictest requirements appear to conflict with the best interest of residents.

Rising Cases and the Unvaccinated

COVID-19 is on the rise with a vast majority of cases occurring in unvaccinated individuals despite the availability of a safe, highly effective vaccine.

Data collected in licensed adult and senior care facilities between 7/1/21-8/15/21 showed:

- Residents who are **fully or at least partially vaccinated** were approximately ***4 times less likely to be hospitalized.***



Vaccination Verification for Visitors

Develop a process to **verify** and **keep records** of indoor visitation that includes:

- The vaccination status of all visitors, OR
- For unvaccinated/incompletely vaccinated visitors, their proof of a negative COVID-19 diagnostic test, taken within 72-hours hours of each indoor visit.

Your verification recordkeeping must be made available upon request to CDSS or to the local health jurisdiction for purposes of case investigation.



Vaccination Verification and Recordkeeping cont.



The image shows a COVID-19 Vaccination Record Card from the CDC. It includes fields for Last Name, First Name, Sex, Date of Birth, Patient number (medical record or ID record number), and a table for recording vaccine doses. The table has columns for Vaccine, Product Name/Manufacturer Lot Number, Date, and Healthcare Professional or Clinic Site. The table rows are for 1st Dose COVID-19, 2nd Dose COVID-19, and two rows for Other.

Vaccine	Product Name/Manufacturer Lot Number	Date	Healthcare Professional or Clinic Site
1st Dose COVID-19		mm / dd / yy	
2nd Dose COVID-19		mm / dd / yy	
Other		mm / dd / yy	
Other		mm / dd / yy	

- Indoor Visitors will be required to show proof of their COVID-19 vaccination.
 - *If proof is not provided, they are considered unvaccinated.*
- The following modes may be used as proof (*same standard used for facility staff*):
 - COVID-19 Vaccination Record Card (CDC or WHO Yellow Card)
 - A photo of a Vaccination Record Card
 - A photo of the Vaccination Record Card stored on a phone
 - Documentation from a healthcare provider
 - A digital record from a QR code displaying client name, date of birth, vaccine dates and vaccine type

Exceptions to Vaccination, Testing, Verification and Recordkeeping

The vaccination and testing requirements, verification and recordkeeping conditions do **not** apply for the following:

- Outdoor visits
- Visits with a resident, whose death may be imminent.
- Essential visits from agencies tracking vaccination verification.
- Visits from health department officials, regional center, mental/healthcare providers, and essential government authorities.
- Visits mandated by a court order or federal law such as visits by Adult Protective Services or the Long-Term Care Ombudsman.

Indoor and In-Room Visitation

Visitor Vaccination and Testing Requirements

At all times, licensees shall allow indoor visitation, including in-room visitation if the visitor meets the requirements for indoor visitations (Proof of Vaccination/Negative Test Results taken within 72 hours of each visit).

See History of COVID-19 Within the Prior 90 Days of Visit section in **PIN 21-40-ASC** for additional guidance.

Physical Distancing

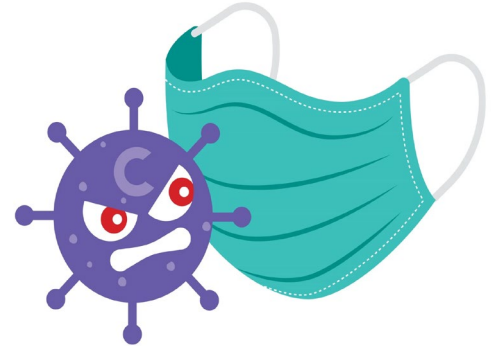
Visitors should physically distance from facility staff and other residents/visitors that are not part of their group at all times while in the facility.



Masking/Face Coverings

Regardless of vaccination status or test result, all visitors must wear:

- **a well-fitted face mask** (surgical mask or double-mask is recommended) upon entry and while indoors at the facility
- **any other personal protective equipment (PPE)** as deemed appropriate while in resident's room (for example: when visiting a resident under quarantine or isolation)



Outdoor and Virtual Visitation

Outdoor Visitation

- Safer and preferred.
- Must be allowed if weather permits.
- The resident and visitor encouraged to keep at least six (6) feet apart from each other, unless they are both fully vaccinated.
- The resident and visitor encouraged to wear a well-fitting face covering, regardless of vaccination status.

Virtual Visitation

- Licensees must allow and provide assistance in arranging for alternative communication for visitors such as phone calls, video calls, and online communications.



Additional Resources

CA Dept of Social Services (CDSS) CCLD Home Page:

<https://www.cdss.ca.gov/inforesources/community-care-licensing>

- Current information on COVID-19.
- Current Adult and Senior Care Provider Informational Notices (PINs)

To sign-up, visit [cclid.ca.gov](https://www.cdss.ca.gov) and click on “receive important updates.”

CA Dept of Public Health (CDPH):

<https://www.cdph.ca.gov/Programs/CID/DCDC/Pages/Immunization/nCOV2019.aspx>

Centers For Disease Control (CDC):

<https://www.cdc.gov/coronavirus/2019-ncov/community/organizations>

Questions?

Use the Zoom Q&A box to submit your questions.

Text CDSS to 22333. Once you have joined the session, text your question(s) (carrier rates apply).

If you have additional questions, please contact your local Adult and Senior Care Office or email us at CCLCOVID-19INFO@dss.ca.gov.

To provide feedback about today's session or submit suggestions for future call topics, please click link below to complete a short survey:

<https://www.surveymonkey.com/r/PICSept03-2021>