



1

---

---

---

---

---

---

---

---



2

---

---

---

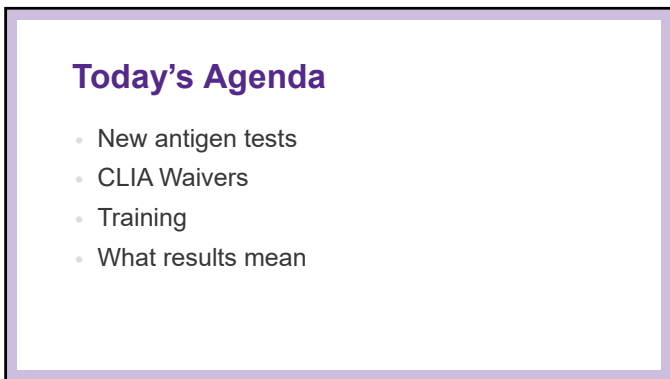
---

---

---

---

---



3

---

---

---

---

---

---

---

---

# Types of tests

4

---

---

---

---

---

---

---

---

- ## Types of Tests
- PCR
  - Antigen
  - Antibody

5

---

---

---

---

---


---

---

---

## Abbott BinaxNOW Antigen Test

- FDA emergency use authorization
- Symptomatic (first 7 days of onset)
- Results in 15 minutes
- \$5 per test

The image shows the Abbott BinaxNOW COVID-19 Ag CARD. It is a rectangular device with a pink top section containing the Abbott logo. Below the logo, there are two small circular wells labeled 'CONTROL' and 'SAMPLE'. To the right of the 'SAMPLE' well is a QR code. At the bottom of the device, the text 'BinaxNOW COVID-19 Ag CARD' is printed.

6

---

---

---

---

---

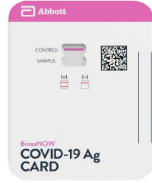
---

---

---

## Abbott BinaxNOW Antigen Test

- Federal government bought 150 million tests
- Sending to skilled nursing and assisted living communities
- Through December



7

---

---

---

---

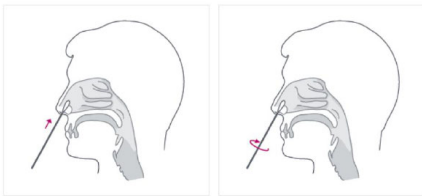
---

---

---

---

### Abbott BinaxNOW



8

---

---

---

---

---

---

---

---

### Abbott BinaxNOW

- 1 Add the extraction reagent
- 2 Insert the sample nasal swab
- 3 Rotate the nasal swab shaft three times
- 4 Close the test card; wait 15 minutes
- 5 Results are read visually

9

---

---

---

---

---

---

---

---

### Other Antigen Tests



---

---

---

---

---

---

---

---

10

### CLIA Waiver

---

---

---

---

---

---

---

---

11

### CLIA Waivers

- CMS and state agencies regulate laboratories
- CLIA Waiver allows non-complex tests outside a "laboratory"
- Waives many lab qualifications/requirements

---

---

---

---

---

---

---

---

12

## In California

- CDPH – Laboratory Field Services
- CLIA Waiver Application
- Laboratory Registration
- Laboratory “Director”

13

---

---

---

---

---

---

---

---



14

---

---

---

---

---

---

---

---

## Lab Director

- Physician or similarly qualified
- Signs of on application and registration
- Can oversee multiple waivers

15

---

---

---

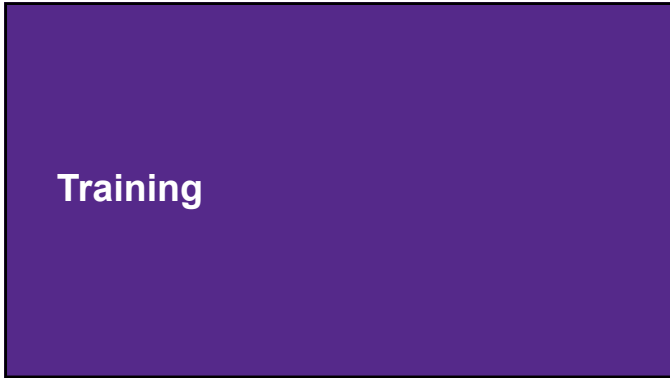
---

---

---

---

---



16

---

---

---

---

---

---

---

---

**Training**

- Licensed medical professional
- Complete Abbott training modules
- Document

17

---

---

---

---

---

---

---

---

**TRAINING VIDEOS**

The BliassNOW™ COVID-19 Ag Card training video provides a detailed step-by-step guide to the test process. The training video, divided into modules, should be completed in its entirety before performing tests on individuals. The modules are designed to be completed in the order shown below.

**MODULE 1: GETTING STARTED**

This module will provide an overview of the test, review test kit contents and review kit storage and stability.

18

---

---

---

---

---

---

---

---

## Performing Tests

19

---

---

---

---

---

---

---

---

- ### Performing Tests
- Wear PPE
  - Follow manufacturer instructions
  - **Do not** diagnose or order treatments!
  - Report results

20

---

---

---

---

---

---

---

---

- ### Results
- CMS and FDA have provided guidance allowing use for asymptomatic persons
  - Generally for exposure or outbreak response

21

---

---

---

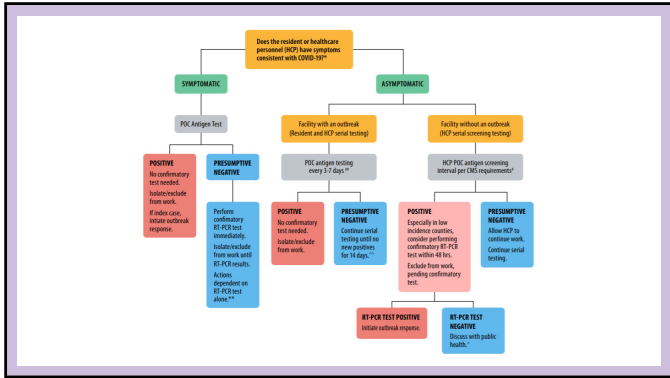
---

---

---

---

---



22

---

---

---

---

---


---

---

---

# COVID-19

## Antigen Testing



23

---

---

---

---

---

---

---

---